

South Fork Wind Farm Community Information Sheet

U.S. EPA | PERMITS UNDER THE CLEAN AIR ACT

U.S. EPA SEEKS PUBLIC INPUT

South Fork Wind, LLC's Windfarm off the coast of Massachusetts

CONTACTS:

UNDINE KIPKA

EPA Air Permitting
(617) 918-1335
kipka.undine@epa.gov

MADLINE ISENBERG

Air Permitting
Environmental Justice
Coordinator
(617) 918-1271
isenberg.madeline@epa.gov

On June 24, 2021, U.S. EPA issued a draft permit under the Clean Air Act (CAA) to South Fork Wind, LLC for the construction and operation of an offshore windfarm on the Outer Continental Shelf (OCS). The proposed windfarm will be located in federal waters in the Bureau of Ocean Energy Management (BOEM) Renewable Energy Lease Area OCS-A 0517 located southwest of Martha's Vineyard, Massachusetts. The EPA is proposing to issue the OCS air permit pursuant to section 328 of the CAA and applicable rules and regulations promulgated under 40 C.F.R. part 55. We are soliciting comments related to the air emission impacts and substance of the proposed CAA permit for the windfarm.

The public comment period will close on August 9, 2021.

VIRTUAL EVENTS

EPA will be hosting a virtual event regarding the draft permit.

Virtual Formal Public Hearing to Provide Oral Comments

MONDAY, AUGUST 9, 2021, 7PM

For registration information regarding the public hearing, please visit:
<https://www.epa.gov/caa-permitting/caa-public-comment-opportunities-region-1>

The virtual public hearing will be conducted in the English language. If you need a reasonable accommodation or have translation/interpretation needs, please contact Undine Kipka at (617) 918-1335 or email: kipka.undine@epa.gov by no later than July 26, 2021.

THE FACILITY

EPA Region 1 proposed a draft OCS air permit for the South Fork Windfarm, a proposed offshore wind energy project with an estimated maximum capacity of 130 megawatts (MW). The windfarm will include up to 15 wind turbine generators (WTGs) with a capacity of 6 to 12 MW per turbine, submarine cables between the WTGs, and an Electrical Service Platform (ESP), all of which will be located within federal waters on the OCS, specifically in BOEM Renewable Energy Lease Area OCS-A 0517 approximately 23 miles southwest of Martha's Vineyard, Massachusetts. An alternating current electric cable will connect the windfarm to the existing mainland electric grid in East Hampton, New York.

See Figure 1 for a map displaying the site location.

continued >>

The project is scheduled to begin construction in 2022 and to be commissioned and operational by the end of 2023. Construction is expected to last 2 years, whereas the overall life of the project is expected to last 30 years. The “potential to emit” for this OCS source includes emissions from vessels installing the WTGs and the ESP, engines on the WTGs and ESP, as well as vessels that are at and are traveling within 25 miles to-and-from the windfarm during construction, operations and maintenance of the windfarm. Criteria air pollutant emissions and their precursors generated from the construction and operation of the windfarm include nitrogen oxides, carbon monoxide, sulfur dioxide, particulate matter, and volatile organic compounds. These air pollutants are associated with the combustion of diesel fuel in a vessel’s propulsion and auxiliary engines and the engine(s) located on WTGs and ESP.

WINDFARM CONSTRUCTION ACTIVITIES OF POTENTIAL INTEREST TO COMMUNITIES

The windfarm’s construction vessels will transit between onshore support and staging facilities at ports located in Connecticut, Massachusetts, Rhode Island, New York, New Jersey, Maryland and Virginia and the windfarm work area. These ports include New Bedford, MA; Providence, RI, and New London, CT. EPA’s OCS air permit only regulates the emissions from construction activity located directly in the windfarm’s work area on the OCS, as well as emissions from vessels travelling within 25 miles of the windfarm’s work area. Although port communities may indirectly experience increased activity at the port as a result of the project, EPA does not have the authority within section 328 of the CAA to regulate the air emissions at ports as a result of this project. In addition to the potential indirect impacts on ports, local fisherman may also be indirectly impacted by the project. EPA is conducting enhanced outreach as part of the permit issuance process, including hosting a virtual public hearing on August 9, to facilitate meaningful community representation and allow for effective public participation in the permitting process.

CONDITIONS OF THE DRAFT OCS AIR PERMIT

The draft permit regulates pollutants from “Outer Continental Shelf sources,” such as jack-up barges that will construct each WTG and the ESP. Additionally, emissions associated with air-emitting devices used during the operation of the windfarm, i.e., generators used as a source of back-up electricity for space conditioning where sensitive electronics are housed, are also regulated.

Consistent with CAA requirements for OCS sources, to-and-fro vessel emissions were considered to be direct emissions from the source when travelling within 25 miles of the windfarm. The direct emissions determine the type of regulatory requirements included with the permit, but only a subset of those direction emissions from vessels and equipment that meet the definition of an OCS source are subject to specific emission control requirements. The addition of these vessel emissions required stringent “lowest achievable emissions rate” for nitrogen oxides, as well as “best available control technology” for particulate matter and nitrogen dioxide for OCS sources. Additionally, emission offsetting is required for nitrogen oxides.

The draft permit requires the use of low-sulfur fuel, as well as requirements to use the cleanest vessels available to South Fork Wind, LLC at the time of deployment for both construction and operation-related activities. In addition, the permit requires Tier 4 engines (i.e. cleaner engines) for installation on the WTGs and ESP. The draft permit also contains comprehensive monitoring, recordkeeping, and reporting requirements to ensure compliance with the permit conditions.

COMMENTING ON THE DRAFT PERMIT

During EPA's August 9, 2021, virtual formal public hearing, EPA will accept oral comments on the Draft Permit from any interested person. The public may also provide formal comments in writing, submitted by email or by regular mail. All written comments must be received by EPA or postmarked by August 9, 2021. Please note that EPA will not respond to comments or questions, other than procedural questions, during the August 9, 2021 virtual public hearing; however, EPA will respond in writing to all significant issues raised during the public comment period when EPA issues a final permit decision.

PROVIDING COMMENTS

EPA's Public Comment Period opens June 24, 2021 through August 9, 2021. All comments must be received or postmarked by August 9, 2021.

EPA prefers written comments be sent via email to: kipka.undine@epa.gov

Comments may also be submitted electronically via www.regulations.gov,
Reference Docket ID: EPA-R01-OAR-2021-0392

If electronic submittal is not feasible, EPA will also accept written comments by mail to:

Undine Kipka, EPA Region 1
5 Post Office Square, Suite 100 (05-2)
Boston, MA 02109

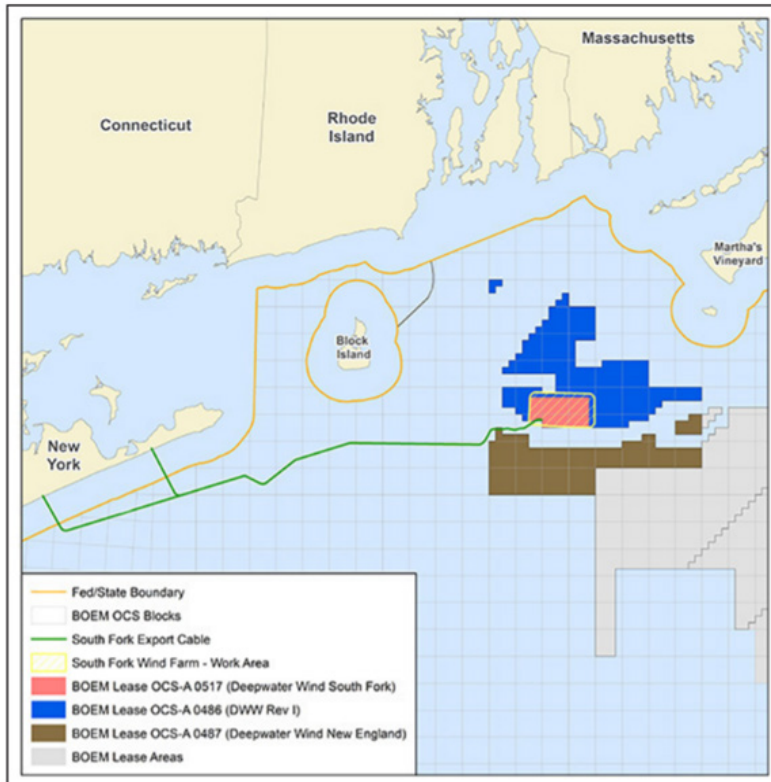


Figure 1: Work Area and Export Cable Route for the South Fork Wind, LLC Project

Map depicting the work area and export cable route for the South Fork Wind LLC project. The work area is located approximately 23 miles southwest of Martha's Vineyard, Massachusetts.

Source: DOI Bureau of Ocean Energy Management Draft Environmental Impact Statement for the South Fork Windfarm, Jan. 4, 2021