



# EJScreen Community Report

This report provides environmental and socioeconomic information for user-defined areas, and combines that data into environmental justice and supplemental indexes.

## Republic Services - US Ecology

1 mile Ring around the Area  
Population: 104  
Area in square miles: 7.75



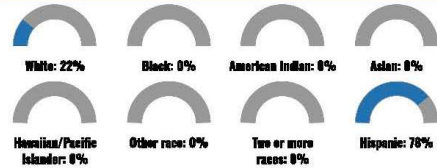
Source: Esri, 2024  
Aerial Imagery: USGS, Landsat

1:36,112  
0 0.25 0.5 0.75 1.0 1.25  
Miles

### COMMUNITY INFORMATION



### BREAKDOWN BY RACE



### BREAKDOWN BY AGE



### LIMITED ENGLISH SPEAKING BREAKDOWN



Notes: Numbers may not sum to totals due to rounding. Hispanic population can be of any race. Source: U.S. Census Bureau, American Community Survey (ACS) 2016-2022. Life expectancy data comes from the Centers for Disease Control.

### LANGUAGES SPOKEN AT HOME

LANGUAGE	PERCENT
No language data available.	

Report for 1 mile Ring around the Area

Report produced September 26, 2024 using EJScreen Version 2.3

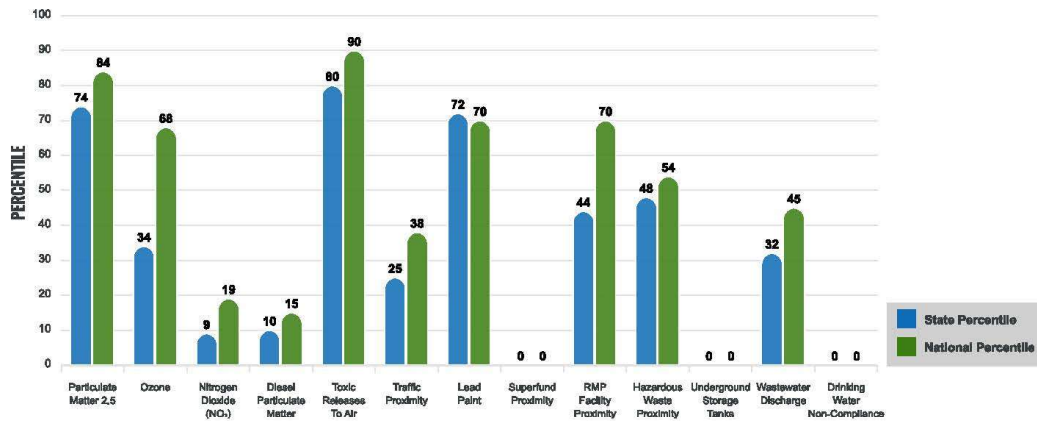
## Environmental Justice & Supplemental Indexes

The environmental justice and supplemental indexes are a combination of environmental and socioeconomic information. There are thirteen EJ Indexes and supplemental indexes in EJScreen reflecting the 13 environmental indicators. The indexes for a selected area are compared to those for all other locations in the state or nation. For more information and calculation details on the EJ and supplemental indexes, please visit the [EJScreen website](#).

### EJ INDEXES

The EJ indexes help users screen for potential EJ concerns. To do this, the EJ index combines data on low income and people of color populations with a single environmental indicator.

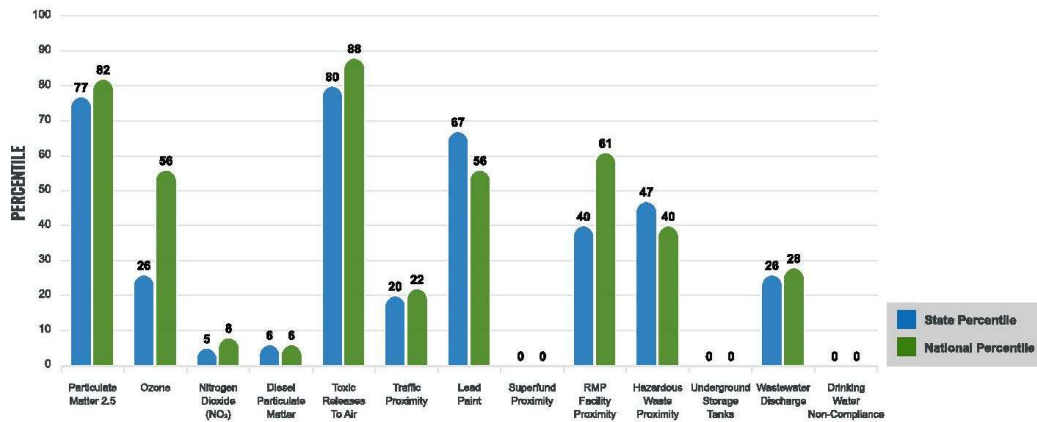
#### EJ INDEXES FOR THE SELECTED LOCATION



### SUPPLEMENTAL INDEXES

The supplemental indexes offer a different perspective on community-level vulnerability. They combine data on percent low income, percent persons with disabilities, percent less than high school education, percent limited English speaking, and percent low life expectancy with a single environmental indicator.

#### SUPPLEMENTAL INDEXES FOR THE SELECTED LOCATION



Report for 1 mile Ring around the Area

Report produced September 26, 2024 using EJScreen Version 2.3

## EJScreen Environmental and Socioeconomic Indicators Data

SELECTED VARIABLES	VALUE	STATE AVERAGE	PERCENTILE IN STATE	USA AVERAGE	PERCENTILE IN USA
<b>ENVIRONMENTAL BURDEN INDICATORS</b>					
Particulate Matter 2.5 ( $\mu\text{g}/\text{m}^3$ )	9.4	8.86	72	8.45	81
Ozone (ppb)	59.5	63	22	61.8	45
Nitrogen Dioxide ( $\text{NO}_2$ ) (ppbv)	3.2	9.5	4	7.8	7
Diesel Particulate Matter ( $\mu\text{g}/\text{m}^3$ )	0.0442	0.151	6	0.191	6
Toxic Releases to Air (toxicity-weighted concentration)	16,000	12,000	82	4,600	95
Traffic Proximity (daily traffic count/distance to road)	110,000	1,000,000	16	1,700,000	18
Lead Paint (% Pre-1960 Housing)	0.21	0.16	71	0.3	49
Superfund Proximity (site count/km distance)	0	0.11	0	0.39	0
RMP Facility Proximity (facility count/km distance)	0.3	0.95	31	0.57	52
Hazardous Waste Proximity (facility count/km distance)	0.43	1.5	36	3.5	31
Underground Storage Tanks (count/km <sup>2</sup> )	0	2.3	0	3.6	0
Wastewater Discharge (toxicity-weighted concentration/m distance)	1.3	3800	21	700000	23
Drinking Water Non-Compliance (points)	0	2.3	0	2.2	0
<b>SOCIOECONOMIC INDICATORS</b>					
Demographic Index USA	1.76	N/A	N/A	1.34	71
Supplemental Demographic Index USA	1.69	N/A	N/A	1.64	59
Demographic Index State	1.8	1.72	55	N/A	N/A
Supplemental Demographic Index State	1.45	1.49	51	N/A	N/A
People of Color	78%	58%	66	40%	82
Low Income	22%	34%	36	30%	42
Unemployment Rate	5%	5%	64	6%	63
Limited English Speaking Households	1%	8%	42	5%	58
Less Than High School Education	11%	16%	49	11%	62
Under Age 5	13%	6%	90	5%	93
Over Age 64	22%	15%	81	18%	73

\*Diesel particulate matter index is from the EPA's Air Toxics Data Update, which is the Agency's ongoing, comprehensive evaluation of air toxics in the United States. This effort aims to prioritize air toxics, emission sources, and locations of interest for further study. It is important to remember that the air toxics data presented here provide broad estimates of health risks over geographic areas of the country, not definitive risks to specific individuals or locations. More information on the Air Toxics Data Update can be found at: <https://www.epa.gov/air-toxics-data-update>.

### Sites reporting to EPA within defined area:

Superfund .....	0
Hazardous Waste, Treatment, Storage, and Disposal Facilities .....	1
Water Dischargers .....	6
Air Pollution .....	2
Brownfields .....	0
Toxic Release Inventory .....	1

### Other community features within defined area:

Schools .....	0
Hospitals .....	0
Places of Worship .....	0

### Other environmental data:

Air Non-attainment .....	No
Impaired Waters .....	No

Selected location contains American Indian Reservation Lands* .....	No
Selected location contains a "Justice40 (CEIST)" disadvantaged community .....	Yes
Selected location contains an EPA IRA disadvantaged community .....	Yes

Report for 1 mile Ring around the Area

Report produced September 26, 2024 using EJScreen Version 2.3

## EJScreen Environmental and Socioeconomic Indicators Data

HEALTH INDICATORS					
INDICATOR	VALUE	STATE AVERAGE	STATE PERCENTILE	US AVERAGE	US PERCENTILE
Low Life Expectancy	19%	20%	45	20%	51
Heart Disease	6.1	5.4	64	5.8	59
Asthma	9.4	9.8	35	10.3	25
Cancer	5.2	5.5	45	6.4	25
Persons with Disabilities	20.2%	12.6%	89	13.7%	86

CLIMATE INDICATORS					
INDICATOR	VALUE	STATE AVERAGE	STATE PERCENTILE	US AVERAGE	US PERCENTILE
Flood Risk	19%	10%	87	12%	84
Wildfire Risk	0%	30%	0	14%	0

CRITICAL SERVICE GAPS					
INDICATOR	VALUE	STATE AVERAGE	STATE PERCENTILE	US AVERAGE	US PERCENTILE
Broadband Internet	14%	13%	61	13%	63
Lack of Health Insurance	17%	18%	51	9%	88
Housing Burden	No	N/A	N/A	N/A	N/A
Transportation Access Burden	Yes	N/A	N/A	N/A	N/A
Food Desert	Yes	N/A	N/A	N/A	N/A

Report for 1 mile Ring around the Area

Report produced September 26, 2024 using EJScreen Version 2.3





# EJScreen Community Report

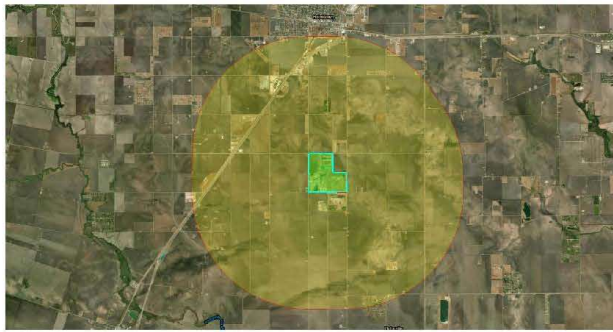
This report provides environmental and socioeconomic information for user-defined areas, and combines that data into environmental justice and supplemental indexes.

## Republic Services - US Ecology

3 miles Ring around the Area

Population: 1,458

Area in square miles: 40.33



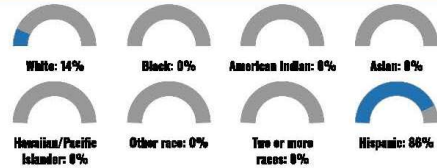
Source: Esri, 2024  
Copyright 2024 US Ecology

1/2/2024  
Scale: 1:100,000  
Data: US Census, USGS, NOAA, etc.

### COMMUNITY INFORMATION



### BREAKDOWN BY RACE



### BREAKDOWN BY AGE



### LIMITED ENGLISH SPEAKING BREAKDOWN



Notes: Numbers may not sum to totals due to rounding. Hispanic population can be of any race. Source: U.S. Census Bureau, American Community Survey (ACS) 2016-2022. Life expectancy data comes from the Centers for Disease Control.

### LANGUAGES SPOKEN AT HOME

LANGUAGE	PERCENT
English	48%
Spanish	51%
Other Indo-European	1%
Total Non-English	52%

Report for 3 miles Ring around the Area

Report produced September 26, 2024 using EJScreen Version 2.3

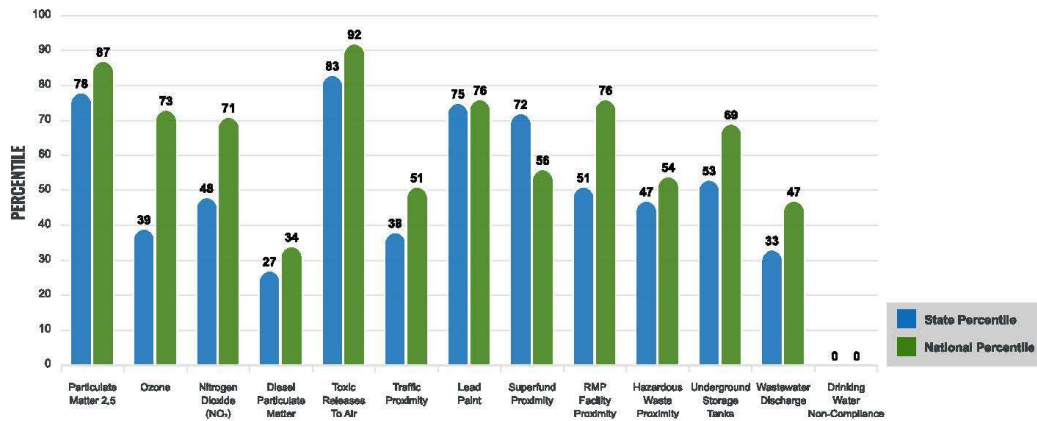
## Environmental Justice & Supplemental Indexes

The environmental justice and supplemental indexes are a combination of environmental and socioeconomic information. There are thirteen EJ indexes and supplemental indexes in EJScreen reflecting the 13 environmental indicators. The indexes for a selected area are compared to those for all other locations in the state or nation. For more information and calculation details on the EJ and supplemental indexes, please visit the [EJScreen website](#).

### EJ INDEXES

The EJ indexes help users screen for potential EJ concerns. To do this, the EJ index combines data on low income and people of color populations with a single environmental indicator.

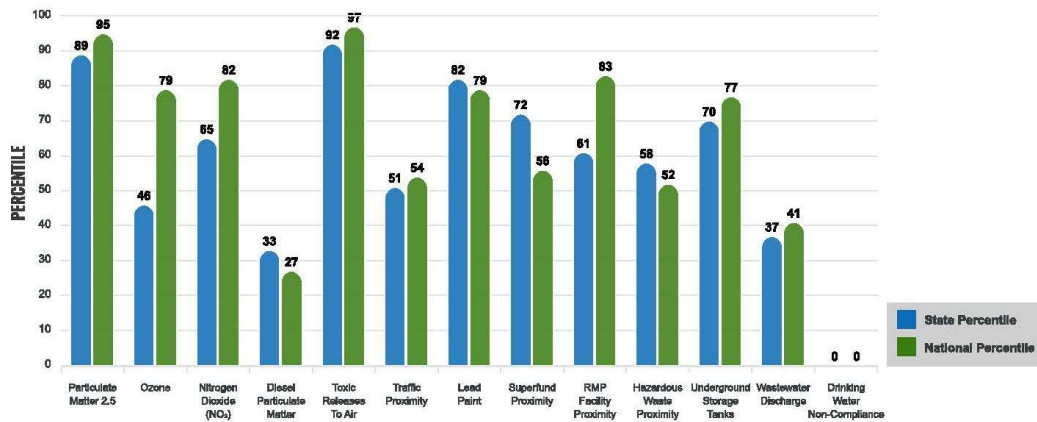
#### EJ INDEXES FOR THE SELECTED LOCATION



### SUPPLEMENTAL INDEXES

The supplemental indexes offer a different perspective on community-level vulnerability. They combine data on percent low income, percent persons with disabilities, percent less than high school education, percent limited English speaking, and percent low life expectancy with a single environmental indicator.

#### SUPPLEMENTAL INDEXES FOR THE SELECTED LOCATION



Report for 3 miles Ring around the Area

Report produced September 26, 2024 using EJScreen Version 2.3

## EJScreen Environmental and Socioeconomic Indicators Data

SELECTED VARIABLES	VALUE	STATE AVERAGE	PERCENTILE IN STATE	USA AVERAGE	PERCENTILE IN USA
<b>ENVIRONMENTAL BURDEN INDICATORS</b>					
Particulate Matter 2.5 ( $\mu\text{g}/\text{m}^3$ )	9.28	8.86	70	8.45	79
Ozone (ppb)	59.7	63	23	61.8	46
Nitrogen Dioxide ( $\text{NO}_2$ ) (ppbv)	7.3	9.5	30	7.8	47
Diesel Particulate Matter ( $\mu\text{g}/\text{m}^3$ )	0.0632	0.151	15	0.191	13
Toxic Releases to Air (toxicity-weighted concentration)	11,000	12,000	80	4,600	93
Traffic Proximity (daily traffic count/distance to road)	250,000	1,000,000	26	1,700,000	28
Lead Paint (% Pre-1960 Housing)	0.29	0.16	77	0.3	57
Superfund Proximity (site count/km distance)	0.0012	0.11	72	0.39	56
RMP Facility Proximity (facility count/km distance)	0.39	0.95	36	0.57	57
Hazardous Waste Proximity (facility count/km distance)	0.34	1.5	33	3.5	28
Underground Storage Tanks (count/km <sup>2</sup> )	1.5	2.3	51	3.6	58
Wastewater Discharge (toxicity-weighted concentration/m distance)	1.2	3800	20	700000	22
Drinking Water Non-Compliance (points)	0	2.3	0	2.2	0
<b>SOCIOECONOMIC INDICATORS</b>					
Demographic Index USA	1.99	N/A	N/A	1.34	77
Supplemental Demographic Index USA	2.58	N/A	N/A	1.64	90
Demographic Index State	2.03	1.72	63	N/A	N/A
Supplemental Demographic Index State	2.21	1.49	84	N/A	N/A
People of Color	86%	58%	74	40%	86
Low Income	27%	34%	43	30%	50
Unemployment Rate	10%	5%	83	6%	82
Limited English Speaking Households	22%	8%	89	5%	94
Less Than High School Education	30%	16%	82	11%	92
Under Age 5	12%	6%	87	5%	91
Over Age 64	16%	15%	64	18%	51

\*Diesel particulate matter index is from the EPA's Air Toxics Data Update, which is the Agency's ongoing, comprehensive evaluation of air toxics in the United States. This effort aims to prioritize air toxics, emission sources, and locations of interest for further study. It is important to remember that the air toxics data presented here provide broad estimates of health risks over geographic areas of the country, not definitive risks to specific individuals or locations. More information on the Air Toxics Data Update can be found at: <https://www.epa.gov/assess-air-toxics-data-update>.

### Sites reporting to EPA within defined area:

Superfund .....	0
Hazardous Waste, Treatment, Storage, and Disposal Facilities .....	1
Water Dischargers .....	29
Air Pollution .....	2
Brownfields .....	0
Toxic Release Inventory .....	3

### Other community features within defined area:

Schools .....	0
Hospitals .....	0
Places of Worship .....	0

### Other environmental data:

Air Non-attainment .....	No
Impaired Waters .....	Yes

Selected location contains American Indian Reservation Lands* .....	No
Selected location contains a "Justice40 (CEIST)" disadvantaged community .....	Yes
Selected location contains an EPA IRA disadvantaged community .....	Yes

Report for 3 miles Ring around the Area

Report produced September 26, 2024 using EJScreen Version 2.3

## EJScreen Environmental and Socioeconomic Indicators Data

HEALTH INDICATORS					
INDICATOR	VALUE	STATE AVERAGE	STATE PERCENTILE	US AVERAGE	US PERCENTILE
Low Life Expectancy	22%	20%	70	20%	71
Heart Disease	7.2	5.4	81	5.8	78
Asthma	10.1	9.8	64	10.3	45
Cancer	4.9	5.5	39	6.4	21
Persons with Disabilities	18.6%	12.6%	85	13.7%	80

CLIMATE INDICATORS					
INDICATOR	VALUE	STATE AVERAGE	STATE PERCENTILE	US AVERAGE	US PERCENTILE
Flood Risk	44%	10%	94	12%	94
Wildfire Risk	0%	30%	54	14%	77

CRITICAL SERVICE GAPS					
INDICATOR	VALUE	STATE AVERAGE	STATE PERCENTILE	US AVERAGE	US PERCENTILE
Broadband Internet	23%	13%	79	13%	82
Lack of Health Insurance	27%	18%	79	9%	97
Housing Burden	No	N/A	N/A	N/A	N/A
Transportation Access Burden	Yes	N/A	N/A	N/A	N/A
Food Desert	Yes	N/A	N/A	N/A	N/A

Report for 3 miles Ring around the Area

Report produced September 26, 2024 using EJScreen Version 2.3



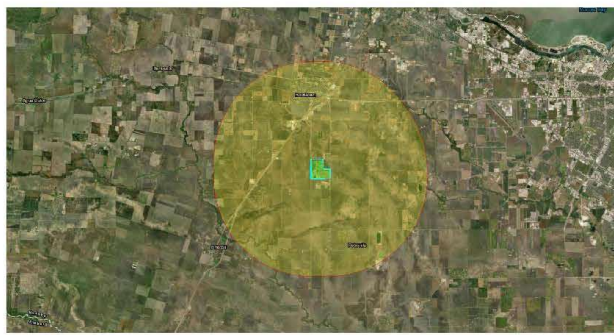


# EJScreen Community Report

This report provides environmental and socioeconomic information for user-defined areas, and combines that data into environmental justice and supplemental indexes.

## Republic Services - US Ecology

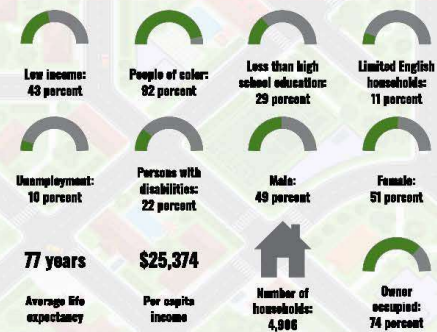
5 miles Ring around the Area  
Population: 14,520  
Area in square miles: 98.03



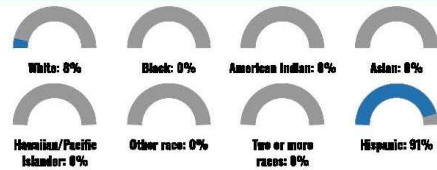
Source: Esri, 2024  
Copyright 2024 US Ecology

1:144,400  
Scale: 1 inch = 2.3 miles  
Map Data: Esri, DeLorme, Garmin, etc.

### COMMUNITY INFORMATION



### BREAKDOWN BY RACE



### BREAKDOWN BY AGE



### LIMITED ENGLISH SPEAKING BREAKDOWN



Notes: Numbers may not sum to totals due to rounding. Hispanic population can be of any race. Source: U.S. Census Bureau, American Community Survey (ACS) 2016-2022. Life expectancy data comes from the Centers for Disease Control.

### LANGUAGES SPOKEN AT HOME

LANGUAGE	PERCENT
English	41%
Spanish	59%
Total Non-English	59%

Report for 5 miles Ring around the Area

Report produced September 26, 2024 using EJScreen Version 2.3

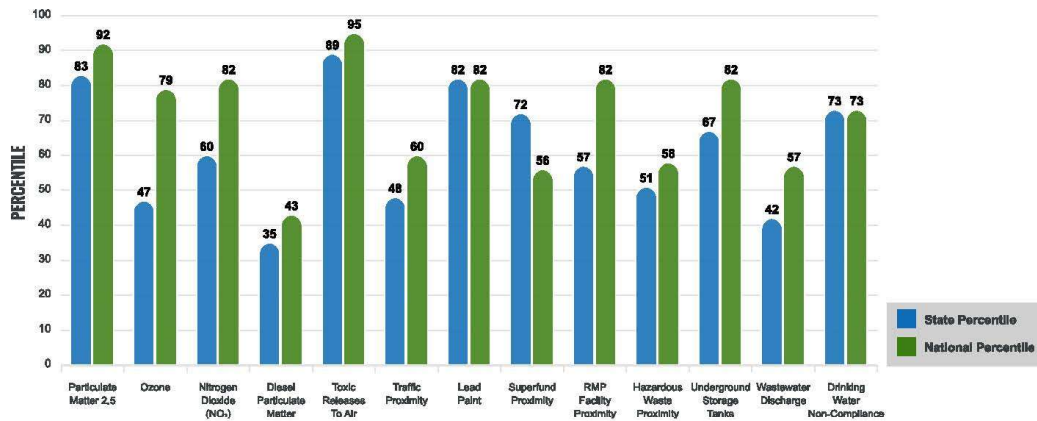
## Environmental Justice & Supplemental Indexes

The environmental justice and supplemental indexes are a combination of environmental and socioeconomic information. There are thirteen EJ Indexes and supplemental indexes in EJScreen reflecting the 13 environmental indicators. The indexes for a selected area are compared to those for all other locations in the state or nation. For more information and calculation details on the EJ and supplemental indexes, please visit the [EJScreen website](#).

### EJ INDEXES

The EJ indexes help users screen for potential EJ concerns. To do this, the EJ index combines data on low income and people of color populations with a single environmental indicator.

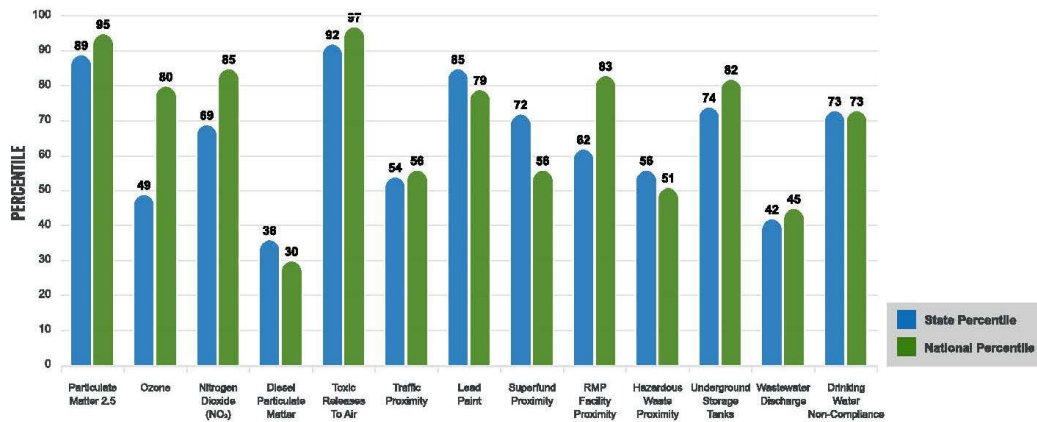
#### EJ INDEXES FOR THE SELECTED LOCATION



### SUPPLEMENTAL INDEXES

The supplemental indexes offer a different perspective on community-level vulnerability. They combine data on percent low income, percent persons with disabilities, percent less than high school education, percent limited English speaking, and percent low life expectancy with a single environmental indicator.

#### SUPPLEMENTAL INDEXES FOR THE SELECTED LOCATION



Report for 5 miles Ring around the Area

Report produced September 26, 2024 using EJScreen Version 2.3

## EJScreen Environmental and Socioeconomic Indicators Data

SELECTED VARIABLES	VALUE	STATE AVERAGE	PERCENTILE IN STATE	USA AVERAGE	PERCENTILE IN USA
<b>ENVIRONMENTAL BURDEN INDICATORS</b>					
Particulate Matter 2.5 (µg/m <sup>3</sup> )	9.23	8.86	68	8.45	78
Ozone (ppb)	59.7	63	23	61.8	47
Nitrogen Dioxide (NO <sub>2</sub> ) (ppbv)	8	9.5	35	7.8	54
Diesel Particulate Matter (µg/m <sup>3</sup> )	0.0661	0.151	16	0.191	14
Toxic Releases to Air (toxicity-weighted concentration)	8,500	12,000	78	4,600	91
Traffic Proximity (daily traffic count/distance to road)	270,000	1,000,000	27	1,700,000	29
Lead Paint (% Pre-1960 Housing)	0.25	0.16	75	0.3	53
Superfund Proximity (site count/km distance)	0.0023	0.11	72	0.39	56
RMP Facility Proximity (facility count/km distance)	0.39	0.95	36	0.57	58
Hazardous Waste Proximity (facility count/km distance)	0.29	1.5	30	3.5	27
Underground Storage Tanks (count/km <sup>2</sup> )	3.8	2.3	78	3.6	74
Wastewater Discharge (toxicity-weighted concentration/m distance)	12	3800	42	700000	37
Drinking Water Non-Compliance (points)	0.00053	2.3	73	2.2	73
<b>SOCIOECONOMIC INDICATORS</b>					
Demographic Index USA	2.46	N/A	N/A	1.34	87
Supplemental Demographic Index USA	2.63	N/A	N/A	1.64	91
Demographic Index State	2.48	1.72	77	N/A	N/A
Supplemental Demographic Index State	2.29	1.49	87	N/A	N/A
People of Color	92%	58%	81	40%	90
Low Income	43%	34%	67	30%	74
Unemployment Rate	11%	5%	84	6%	84
Limited English Speaking Households	11%	8%	76	5%	86
Less Than High School Education	29%	16%	81	11%	91
Under Age 5	6%	6%	54	5%	61
Over Age 64	22%	15%	80	18%	71

\*Diesel particulate matter index is from the EPA's Air Toxics Data Update, which is the Agency's ongoing, comprehensive evaluation of air toxics in the United States. This effort aims to prioritize air toxics, emission sources, and locations of interest for further study. It is important to remember that the air toxics data presented here provide broad estimates of health risks over geographic areas of the country, not definitive risks to specific individuals or locations. More information on the Air Toxics Data Update can be found at: <https://www.epa.gov/assess-air-toxics-data-update>.

### Sites reporting to EPA within defined area:

Superfund .....	0
Hazardous Waste, Treatment, Storage, and Disposal Facilities .....	1
Water Dischargers .....	52
Air Pollution .....	4
Brownfields .....	2
Toxic Release Inventory .....	3

### Other community features within defined area:

Schools .....	8
Hospitals .....	0
Places of Worship .....	8

### Other environmental data:

Air Non-attainment .....	No
Impaired Waters .....	Yes

Selected location contains American Indian Reservation Lands* .....	No
Selected location contains a "Justice40 (CEIST)" disadvantaged community .....	Yes
Selected location contains an EPA IRA disadvantaged community .....	Yes

Report for 5 miles Ring around the Area

Report produced September 26, 2024 using EJScreen Version 2.3

## EJScreen Environmental and Socioeconomic Indicators Data

HEALTH INDICATORS					
INDICATOR	VALUE	STATE AVERAGE	STATE PERCENTILE	US AVERAGE	US PERCENTILE
Low Life Expectancy	23%	20%	80	20%	79
Heart Disease	7.1	5.4	80	5.8	76
Asthma	9.9	9.8	56	10.3	39
Cancer	5	5.5	39	6.4	21
Persons with Disabilities	21.7%	12.6%	92	13.7%	89

CLIMATE INDICATORS					
INDICATOR	VALUE	STATE AVERAGE	STATE PERCENTILE	US AVERAGE	US PERCENTILE
Flood Risk	70%	10%	96	12%	97
Wildfire Risk	0%	30%	54	14%	77

CRITICAL SERVICE GAPS					
INDICATOR	VALUE	STATE AVERAGE	STATE PERCENTILE	US AVERAGE	US PERCENTILE
Broadband Internet	30%	13%	88	13%	91
Lack of Health Insurance	22%	18%	67	9%	94
Housing Burden	No	N/A	N/A	N/A	N/A
Transportation Access Burden	Yes	N/A	N/A	N/A	N/A
Food Desert	Yes	N/A	N/A	N/A	N/A

Report for 5 miles Ring around the Area

Report produced September 26, 2024 using EJScreen Version 2.3